

# GM1ze

## Parts Manual



**CE**

[www.walo.nl](http://www.walo.nl)

**WALO**  
hygiëne en reinigingssystemen



YM207 Rev. 02  
(05-2021)

**HOW TO ORDER PARTS**

Only use GREEN MACHINES supplied or equivalent parts. Parts and supplies may be ordered online, by phone, by fax or by mail.

Follow the steps below to ensure prompt delivery.

1. Identify the machine model.
  2. Identify the machine serial number from the data plate.
  3. Ensure the proper serial number is used from the parts list.
  4. Identify the part number and quantity.  
Do not order by page or reference numbers.
  5. Provide your name, company name, customer ID number, billing and shipping address, phone number and purchase order number.
  6. Provide detail shipping instructions.
- 

Please fill out at time of installation for future reference.

Model No. - \_\_\_\_\_

Serial No. - \_\_\_\_\_

Machine Options - \_\_\_\_\_

Sales Rep. - \_\_\_\_\_

Sales Rep. phone no. - \_\_\_\_\_

Customer ID Number - \_\_\_\_\_

Installation Date - \_\_\_\_\_

**FOR ORDERING PARTS:****Walo Hygiëne en Reinigingssystemen B.V.**

0187-605374  
welkom@walo.n  
www.walo.nl

**FOR TECHNICAL SUPPORT:**

**EMAIL: [service@walo.nl](mailto:service@walo.nl)**

# **Contents**

<b>SECTION 1</b>	<b>Tiller Group</b>
<b>SECTION 2</b>	<b>Control Rod and Front Axle Group</b>
<b>SECTION 3</b>	<b>Main Frame Group</b>
<b>SECTION 4</b>	<b>Rear Axle Group</b>
<b>SECTION 5</b>	<b>Suction Group</b>
<b>SECTION 6</b>	<b>Ancillary Electrical Control Group</b>
<b>SECTION 7</b>	<b>Battery and Charging System Group</b>
<b>SECTION 8</b>	<b>Panels and Ancillary Equipment Group</b>
<b>SECTION 9</b>	<b>Water System Group</b>

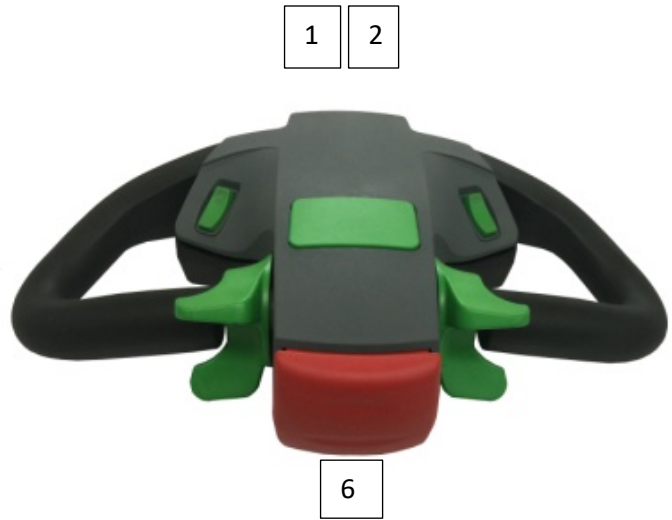
# GENERAL RECOMMENDED MAINTENANCE

## General Recommended Maintenance

Part No.	Serial Number	Description	Qty.
KM430		Dust Filter	1
KM431		Inner Dust Filter	1
AW222		Cuff	1
WP318		Water Spray	1

# STANDARD PARTS

## Section.1 Tiller Group



3



4



5



7

8

9



10



Item	Part No.	Description	Qty
1	ES845	Tiller Head Complete	1
2	CP619	Tiller Head Casing Only	1
3	ES847	Fast/Slow Travel Switch	1
4	ES848	Vacuum Switch	1
5	ES846	Forward/Reverse Control	1
6		Pressure (Belly) Switch (Part of Tiller)	1
7		Decal (Rabbit)	1
8		Decal (Tortoise)	1
9		Decal (Vacuum Fan)	1
10		Decal (Forward-Neutral-Reverse)	2

# STANDARD PARTS

## Section 2- Control Rod and Front Axle Group



1



3



2



4



5



6



7



8



9



Item	Part No.	Description	Qty
1	BB241	Control Rod	1
2	BB242	Control Rod Base	1
3	ES846	Sensor	1
4	EW439	Sensor Cable	1
5	TW067	Front Wheel Complete	2
6	FA240	Front Axle Complete	1
7	GN128	Front Axle Nut	2
8	TW069	Front Tire Only	2
9	TW070	Front Wheel Rims	2



Section 3 - Main Frame Group



1



2



3



4



5



6



7



8



9



10



11



12



13



14



15



16



17



Item	Part No.	Description	Qty
1	CA786	Chassis	1
2	CD813	Rear Protection Casing	1
3	CD814	Vacuum Fan Air Channel	1
4	CD815	R/H & L/H Battery Box	1
5	CD816	Front Battery Box	1
6	CD817	R/H & L/H Gas Strut Bracket	1
7	CD818	R/H & L/H Gas Strut Bracket Chassis	1
8	CD819	Hose Support Bracket	1
9	CD820	Axle Cover	1
10	CD821	Electrical Cable Cover	1
11	CD822	Mud Guard R/H	1
12	CD823	Mud Guard L/H	1
13	CD826	Mudguard R/H (Latest)	1
14	CD827	Mudguard L/H (Latest)	1
15	CD829	Air Deflector Plate	1
16	VT235	Suction Pipe Spigot	1
17	KM435	Glove Box	1

# STANDARD PARTS

## Section 4 – Rear Axle Group



1



2



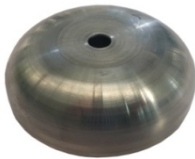
3



4



5



6



7



8



9



<b>Item</b>	<b>Part No.</b>	<b>Description</b>	<b>Qty</b>
1	CT122	Rear Axle Complete	1
2	EP029	Motion Control Driver	1
3	ET327	Drive Motor Brushes	2
4	CT123	Rear Wheel Drive Hub	2
5	TW065	Hub Cap	2
6	TW068	Rear Tyre Complete	2
7	TW071	Rear Tyre Only	2
8	TW072	Rear Tyre Rims	4
9	GN129	Rear Wheel Nut	8

# STANDARD PARTS



1

2

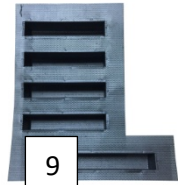


3

4

5

6



7

8

9

10

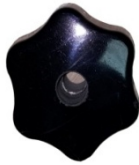
11



12

13

14



15

16

17



18



19



20



21



22



23



24



25



26



27



28



29



30



Item	Part No.	Description	Qty
1	CP620	Filter Housing (GRP) Version 1	1
2	CP620	Filter Housing (Roto mould) Version 2	1
3	KM430	Dust Filter	1
4	KM431	Inner Safety Filter	1
5	KM433	Filter Housing Strainer	1
6	VT234	Suction Pipe	1
7	AW223	Suction Hose	1
8	AW224	Suction Hose for Filter Housing	1
9	GG403	125mm Hose Clamp	2
10	GG404	160mm Hose Clamp	2
11	KM428	Filter Housing Cover	1
12	GG405	Cover Securing Nut	1
13	GG406	Inner Safety Securing Nut	1
14	AW222	Cuff	1
15	VF122	Vacuum Fan Assembly	1
16	EP030	Vacuum Fan Motor	1
17	EW436	Vacuum Fan Connection Cable	1
18	GG400	Suction Pipe Collar Clamp	1
19	GG401	Suction Pipe Wheel Clamp	1
20	GG402	Handle Clamp	1
21	GG411	Suction Hose Clamp	1
22	TW066	Suction Pipe Wheel	1
23	VT236	Cyclone Pipe	1
24	CD824	Suction Hose Flange	1
25	AW225	Suction Hose Handle	1
26	CP626	Inner Liner	1
27	CP622	Debris Container	1
28	GG413	Inner Liner Handle	2
29	KM429	Stud for Dust Filter	1
30	KM432	Vacuum Seal	1

Section 6 – Ancillary Electrical Control Group



1



2



3



4



5



6



7



8



9



10



11



12



13





14



15



16



17



18



19



20



21



## STANDARD PARTS

Item	Part No.	Description	Qty
1	ET326	Electrical Control Box	1
2	ET330	Mounting Plate	1
3	EP028	Voltage Converter	1
4	ES865	Voltage Converter (SPE Charger)	1
5	ES859	Contactora	1
6	ES856	240v Relay	6
7	ES857	24v Relay	5
8	ET322	Connector with Fuse	3
9	ET323	2.5 Automatic Connector	24
10	ET324	Circuit Bridge 4mm	2
11	ET325	Circuit Bridge 6mm	2
12	ES858	Timer Relay	1
13	ES866	Fuse	2
14	ES849	Operator Control Panel	1
15	EH028	Hour Meter	1
16	ES850	Stop Button	1
17	ES851	Battery Voltage Level Indicator	1
18	ES852	Start Switch	1
19	ES853	ON/OFF Switch	3
20	ES854	Beacon	1
21	ES855	Courtesy Light	2

Section 7 – Battery and Charging System Group



1



2



3



4



5



## STANDARD PARTS

Item	Part No.	Description	Qty
1		Battery	
2	EP033	Battery Charger	1
3	ET320	Charge Plug	1
4	ET321	Charge Socket	1
5	EW437	Charging Cable	1

Section 8 – Panels and Ancillary Equipment Group



1



2



3



4



5



6



7



8



9



10



11



12



13



14



15



## STANDARD PARTS

Item	Part No.	Description	Qty
1	CP621	Top Cover (GRP)	1
2	CP621	Top Cover (Plastic)	1
3	GG409	Restrain Cable	2
4	GG397	Cabinet Hinge	1
5	CD830	Hinge Flange	1
6	CD828	Vacuum Pipe Support	1
7	GM717	Vacuum Pipe Rubber	1
8	KM434	Edge Protection	1
9	GG412	Hook Clamp	1
10	GG398	Cabinet Handle	2
11	GG399	Hook	2
12	GG407	Gas Strut	2
13	GG408	Gas Strut with Lock	1
14	CD825	Water Pump Bracket	1
15	GM714	Extinguisher	1

Section 9 – Water System Group

1



2



3



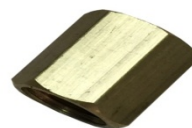
4



5



6



## STANDARD PARTS

Item	Part No.	Description	Qty
1	WA527	Water Tank	1
2	WP317	Spray Pump	1
3	WP318	Water Spray Nozzle	1
4	WP320	Elbow	1
5	WP319	Pneumatic Elbow	1
6	GN127	Sleeve	1



0187-605374  
welkom@walo.nl  
www.walo.nl